

## \$399,900 - 18515 68 Avenue, Edmonton

MLS® #E4430473

**\$399,900**

5 Bedroom, 2.50 Bathroom, 1,359 sqft

Single Family on 0.00 Acres

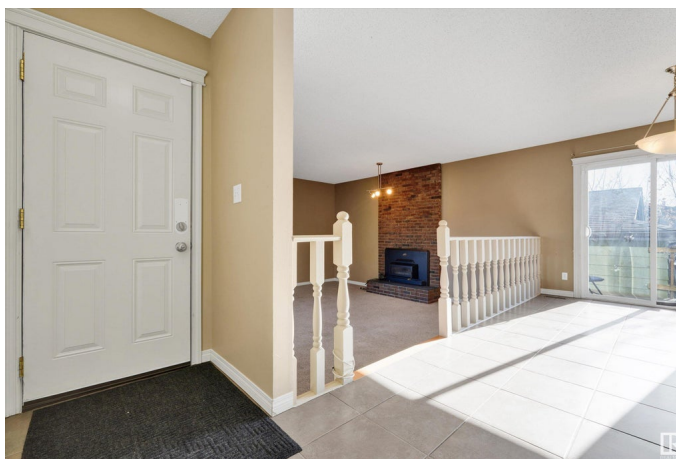
Ormsby Place, Edmonton, AB

5 bedroom bungalow in Ormsby on a MASSIVE cul-de-sac lot. This 1,359 sf home features a SEPERATE back entrance with a secondary/mother in law suite in the basement. The main level features an open concept kitchen complete with large island overlooking the sunken living room with a wood burning fireplace. Patio doors lead out to the deck, huge yard and oversized double garage. The primary bedroom features a walk through closet leading to the private ensuite. 2 additional bedrooms and a full 4 pc bathroom complete the main level. The basement level offers 2 bedrooms, a 4 pc bathroom, a full kitchen and separate laundry along with a 2 large recreation/living areas.

Built in 1978

### Essential Information

MLS® #	E4430473
Price	\$399,900
Bedrooms	5
Bathrooms	2.50
Full Baths	2
Half Baths	1
Square Footage	1,359
Acres	0.00
Year Built	1978



Type	Single Family
Sub-Type	Detached Single Family
Style	Bungalow
Status	Active

### Community Information

Address	18515 68 Avenue
Area	Edmonton
Subdivision	Ormsby Place
City	Edmonton
County	ALBERTA
Province	AB
Postal Code	T5T 2M8

### Amenities

Amenities	See Remarks
Parking Spaces	4
Parking	Double Garage Attached

### Interior

Interior Features	ensuite bathroom
Appliances	Window Coverings, Dryer-Two, Refrigerators-Two, Stoves-Two, Washers-Two, Dishwasher-Two
Heating	Forced Air-1, Natural Gas
Fireplace	Yes
Fireplaces	Brick Facing
Stories	2
Has Basement	Yes
Basement	Full, Finished

### Exterior

Exterior	Wood, Metal
Exterior Features	Cul-De-Sac, Fenced, Golf Nearby, Landscaped, Level Land, No Back Lane, Playground Nearby, Public Transportation, Schools
Roof	Asphalt Shingles
Construction	Wood, Metal
Foundation	Concrete Perimeter

### School Information

Elementary	OrmsbySchool/Good Shepherd
Middle	S Bruce Smith
High	Jasper Place/St.OscarRomer

### **Additional Information**

Date Listed	April 11th, 2025
-------------	------------------

Days on Market	10
----------------	----

Zoning	Zone 20
--------	---------

DATA IS DEEMED RELIABLE BUT IS NOT GUARANTEED ACCURATE BY THE REALTORS® ASSOCIATION OF EDMONTON. COPYRIGHT 2025 BY THE REALTORS® ASSOCIATION OF EDMONTON. ALL RIGHTS RESERVED.Trademarks are owned or controlled by the Canadian Real Estate Association (CREA) and identify real estate professionals who are members of CREA (REALTOR®, REALTORS®) and/or the quality of services they provide (MLS®, Multiple Listing Service®)

Listing information last updated on April 21st, 2025 at 7:17pm MDT