

\$190,000 - 2043 Saddleback Road, Edmonton

MLS® #E4429851

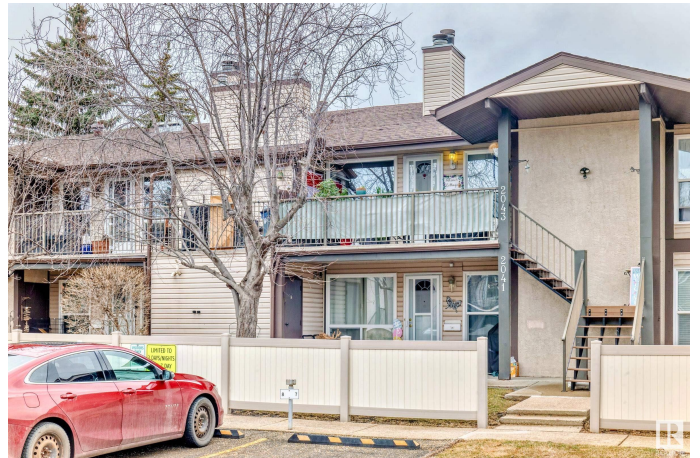
\$190,000

2 Bedroom, 1.00 Bathroom, 893 sqft

Condo / Townhouse on 0.00 Acres

Skyrattler, Edmonton, AB

Don't Miss Out on This Beautifully Remodeled Carriage Home! The bright, sun-filled living room is the perfect place to unwind after a long day. The spacious dining area is ideal for family gatherings, while the custom-built kitchen makes meal prep a joy. Featuring Granite countertops, under-counter lighting, soft-close drawers, full-height upper cabinets, and built-in table with extra cabinetry. Everything you need is here including a walk-in pantry offering plenty of storage. The large Primary bedroom fits a king-sized bed with a walk-in closet while the secondary bedroom could also be used as a den. The completely updated bathroom features a vanity, vinyl flooring, and tub with tile surround. Additional upgrades include Exterior Stairs, Railings, Windows & shingles. Newer Washer, Dryer, Furn, HWT & AC plus a brand-new dishwasher. This property is Conveniently located near the Henday, LRT, parks, walking trails, shopping & dining. Show like a



Built in 1978

Essential Information

MLS® # E4429851

Price \$190,000

Bedrooms 2

Bathrooms	1.00
Full Baths	1
Square Footage	893
Acres	0.00
Year Built	1978
Type	Condo / Townhouse
Sub-Type	Carriage
Style	Bungalow
Status	Active

Community Information

Address	2043 Saddleback Road
Area	Edmonton
Subdivision	Skyrattler
City	Edmonton
County	ALBERTA
Province	AB
Postal Code	T6J 4T4

Amenities

Amenities	Air Conditioner, Parking-Visitor
Parking	Stall

Interior

Appliances	Air Conditioning-Central, Dishwasher-Built-In, Dryer, Microwave Hood Fan, Refrigerator, Stove-Electric, Washer, Window Coverings
Heating	Forced Air-1, Natural Gas
Stories	1
Has Basement	Yes
Basement	None, No Basement

Exterior

Exterior	Wood, Stucco, Vinyl
Exterior Features	Airport Nearby, Golf Nearby, Playground Nearby, Public Swimming Pool, Public Transportation, Schools, Shopping Nearby, Ski Hill Nearby
Roof	Asphalt Shingles
Construction	Wood, Stucco, Vinyl
Foundation	Concrete Perimeter

Additional Information

Date Listed	April 9th, 2025
Days on Market	12
Zoning	Zone 16
Condo Fee	\$326



DATA IS DEEMED RELIABLE BUT IS NOT GUARANTEED ACCURATE BY THE REALTORS® ASSOCIATION OF EDMONTON. COPYRIGHT 2025 BY THE REALTORS® ASSOCIATION OF EDMONTON. ALL RIGHTS RESERVED. Trademarks are owned or controlled by the Canadian Real Estate Association (CREA) and identify real estate professionals who are members of CREA (REALTOR®, REALTORS®) and/or the quality of services they provide (MLS®, Multiple Listing Service®)

Listing information last updated on April 21st, 2025 at 3:17am MDT