

\$335,000 - 204 401 Palisades Way, Sherwood Park

MLS® #E4428737

\$335,000

2 Bedroom, 3.00 Bathroom, 1,441 sqft
Condo / Townhouse on 0.00 Acres

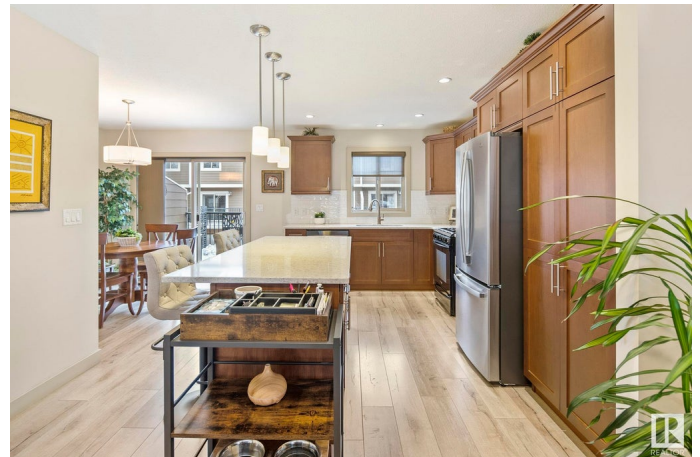
Centennial Village, Sherwood Park, AB

This immaculate end-unit townhouse offers the perfect blend of style, comfort, and convenience. The beautifully updated kitchen features sleek quartz countertops, a stylish new backsplash, and a gas stove, creating a modern and functional space. An open-concept layout flows seamlessly into the living and dining areas, making it ideal for gatherings. Two spacious primary bedrooms, each with a full ensuite, provide ultimate privacy, while the fully finished basement adds extra living space with a fourth washroom. Enjoy the convenience of a double attached garage, front parking, and a huge balcony—perfect for relaxing or entertaining. With central air conditioning for year-round comfort, this home is just steps from Centennial Park and scenic walking trails, close to shopping, dining, and offers a quick commute to major routes. A true 10/10, this home is a must-see!

Built in 2011

Essential Information

MLS® #	E4428737
Price	\$335,000
Bedrooms	2
Bathrooms	3.00
Full Baths	2



Half Baths	2
Square Footage	1,441
Acres	0.00
Year Built	2011
Type	Condo / Townhouse
Sub-Type	Townhouse
Style	2 Storey
Status	Active

Community Information

Address	204 401 Palisades Way
Area	Sherwood Park
Subdivision	Centennial Village
City	Sherwood Park
County	ALBERTA
Province	AB
Postal Code	T8H 0R7

Amenities

Amenities	Air Conditioner, Deck, Front Porch, No Smoking Home, Parking-Visitor
Parking	Double Garage Attached

Interior

Interior Features	ensuite bathroom
Appliances	Air Conditioning-Central, Dishwasher-Built-In, Dryer, Garage Control, Garage Opener, Microwave Hood Fan, Refrigerator, Stove-Gas, Washer, Window Coverings
Heating	Forced Air-1, Natural Gas
Stories	3
Has Basement	Yes
Basement	Full, Finished

Exterior

Exterior	Wood, Brick, Vinyl
Exterior Features	Picnic Area, Playground Nearby, Public Swimming Pool, Public Transportation, Shopping Nearby
Roof	Asphalt Shingles
Construction	Wood, Brick, Vinyl
Foundation	Concrete Perimeter

School Information

Elementary	Woodbridge Farms
Middle	Cloverbar
High	Salisbury

Additional Information

Date Listed	April 3rd, 2025
Days on Market	5
Zoning	Zone 25
Condo Fee	\$486

DATA IS DEEMED RELIABLE BUT IS NOT GUARANTEED ACCURATE BY THE REALTORS® ASSOCIATION OF EDMONTON. COPYRIGHT 2025 BY THE REALTORS® ASSOCIATION OF EDMONTON. ALL RIGHTS RESERVED. Trademarks are owned or controlled by the Canadian Real Estate Association (CREA) and identify real estate professionals who are members of CREA (REALTOR®, REALTORS®) and/or the quality of services they provide (MLS®, Multiple Listing Service®)

Listing information last updated on April 8th, 2025 at 6:02am MDT