

Courtesy Of Aditya Batra Of MaxWell Polaris

\$865,000 - 1389 20 Street, Edmonton

MLS® #E4418108

\$865,000

7 Bedroom, 5.00 Bathroom, 2,303 sqft

Single Family on 0.00 Acres

Laurel, Edmonton, AB

This beautifully upgraded home, located in the highly sought-after LAUREL neighborhood, is a true gem. Offering a spacious TRIPLE CAR GARAGE and modern finishes, the property features tile flooring throughout the main floor and an OPEN TO BELOW CONCEPT. With TWO LIVING AREAS, this home is perfect for family living. The kitchen boasts built-in stainless steel appliances, quartz countertops, and a gas stove, while the additional SPICE KITCHEN adds further convenience. The home has 4 well-sized bedrooms, 3 bathrooms, and a versatile loft area. The LEGAL BASEMENT SUITE offers 3 rooms, 2 full bathrooms, a kitchen, and a separate laundry area with a SEPARATE ENTRANCE, providing excellent rental potential or multi-generational living opportunities. Set on a large 7,200 sq. ft. pie-shaped lot, it also includes 9-ft ceilings on all floors, 8-ft doors on the main level, central air conditioning. A must-see for those seeking quality, space, and modern amenities!

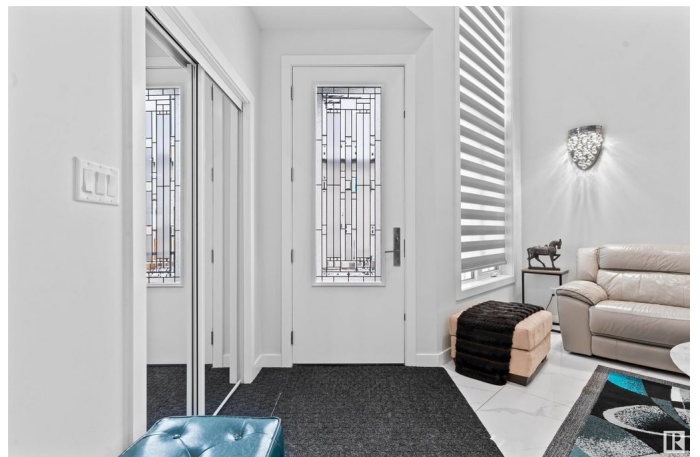
Built in 2022

Essential Information

MLS® # E4418108

Price \$865,000

Bedrooms 7



Bathrooms	5.00
Full Baths	5
Square Footage	2,303
Acres	0.00
Year Built	2022
Type	Single Family
Sub-Type	Detached Single Family
Style	2 Storey
Status	Active

Community Information

Address	1389 20 Street
Area	Edmonton
Subdivision	Laurel
City	Edmonton
County	ALBERTA
Province	AB
Postal Code	T6T 2M7

Amenities

Amenities	Ceiling 9 ft.
Parking	Triple Garage Attached

Interior

Interior Features	ensuite bathroom
Appliances	Air Conditioning-Central, Dishwasher-Built-In, Dryer, Garage Opener, Hood Fan, Oven-Built-In, Oven-Microwave, Stove-Countertop Electric, Stove-Gas, Washer, Dryer-Two, Refrigerators-Two, Washers-Two, Stove-Countertop Inductn, Curtains and Blinds
Heating	Forced Air-1, Natural Gas
Stories	2
Has Basement	Yes
Basement	Full, Finished

Exterior

Exterior	Wood, Vinyl
Exterior Features	Playground Nearby
Roof	Asphalt Shingles
Construction	Wood, Vinyl

Foundation Concrete Perimeter

Additional Information

Date Listed January 15th, 2025

Days on Market 84

Zoning Zone 30

DATA IS DEEMED RELIABLE BUT IS NOT GUARANTEED ACCURATE BY THE REALTORS® ASSOCIATION OF EDMONTON. COPYRIGHT 2025 BY THE REALTORS® ASSOCIATION OF EDMONTON. ALL RIGHTS RESERVED. Trademarks are owned or controlled by the Canadian Real Estate Association (CREA) and identify real estate professionals who are members of CREA (REALTOR®, REALTORS®) and/or the quality of services they provide (MLS®, Multiple Listing Service®)

Listing information last updated on April 9th, 2025 at 1:17pm MDT