

Courtesy Of Jeff D Jackson Of Bode

\$549,900 - 7308 182 Avenue, Edmonton

MLS® #E4417146

\$549,900

3 Bedroom, 2.50 Bathroom, 1,780 sqft
Single Family on 0.00 Acres

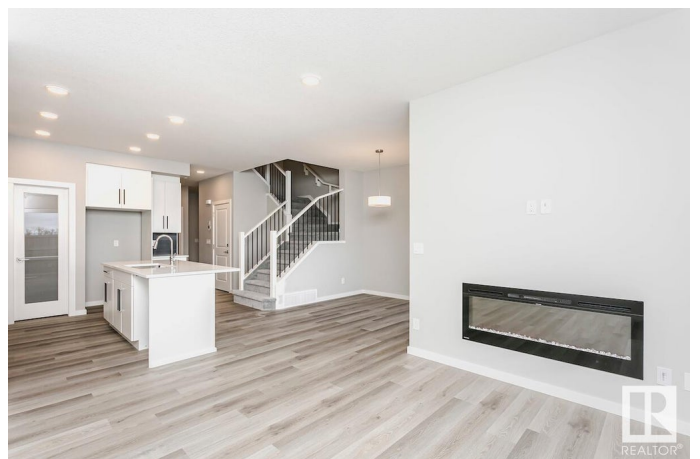
Crystallina Nera East, Edmonton, AB

Welcome to the Julia P model by Bedrock Homes—a modern 3-bedroom, 2.5-bathroom front drive home offering 1700+ sq ft of stylish, functional space in the desirable Crystallina community. This thoughtfully designed home features an open-concept main floor with a cozy 50" LED electric fireplace, luxury vinyl plank flooring, and a gourmet kitchen with 41" upper cabinets, quartz countertops. Upstairs, discover a central bonus room, second-floor laundry, and a primary suite with dual sinks in the ensuite. Built for convenience, this smart home includes a Smart Home Hub, EcoBee thermostat, video doorbell, and Weiser Wi-Fi smart keyless lock. With a double attached garage, this move-in-ready home is perfect for families looking for a blend of comfort and cutting-edge technology in a great neighborhood with easy access to amenities. SIDE ENTRY for future suite!

Built in 2024

Essential Information

MLS® #	E4417146
Price	\$549,900
Bedrooms	3
Bathrooms	2.50
Full Baths	2
Half Baths	1



Square Footage	1,780
Acres	0.00
Year Built	2024
Type	Single Family
Sub-Type	Detached Single Family
Style	2 Storey
Status	Active

Community Information

Address	7308 182 Avenue
Area	Edmonton
Subdivision	Crystallina Nera East
City	Edmonton
County	ALBERTA
Province	AB
Postal Code	T5Z 0J1

Amenities

Amenities	No Animal Home, No Smoking Home
Parking Spaces	4
Parking	Double Garage Attached

Interior

Interior Features	ensuite bathroom
Appliances	None
Heating	Forced Air-1, Natural Gas
Fireplace	Yes
Fireplaces	Insert
Stories	2
Has Basement	Yes
Basement	Full, Unfinished

Exterior

Exterior	Wood, Vinyl
Exterior Features	Park/Reserve, Playground Nearby, Schools, Shopping Nearby
Roof	Asphalt Shingles
Construction	Wood, Vinyl
Foundation	Concrete Perimeter

Additional Information

Date Listed January 6th, 2025

Days on Market 97

Zoning Zone 28

DATA IS DEEMED RELIABLE BUT IS NOT GUARANTEED ACCURATE BY THE REALTORS® ASSOCIATION OF EDMONTON. COPYRIGHT 2025 BY THE REALTORS® ASSOCIATION OF EDMONTON. ALL RIGHTS RESERVED. Trademarks are owned or controlled by the Canadian Real Estate Association (CREA) and identify real estate professionals who are members of CREA (REALTOR®, REALTORS®) and/or the quality of services they provide (MLS®, Multiple Listing Service®)

Listing information last updated on April 13th, 2025 at 8:32am MDT